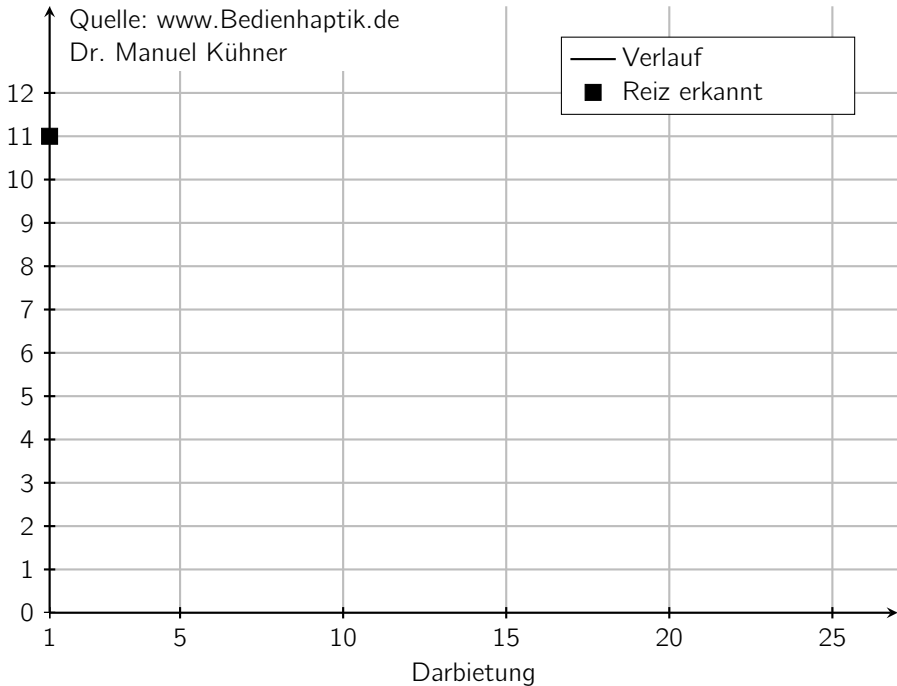


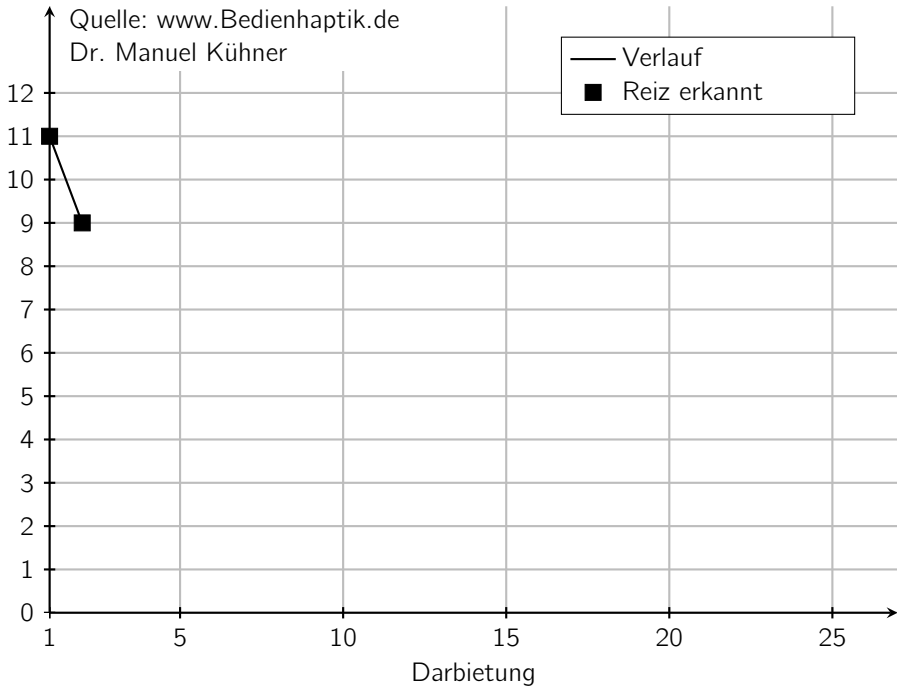
# Transformed-Up/Down-Verfahren (1Up/2Down-Regel)

Quelle: [www.Bedienhaptik.de](http://www.Bedienhaptik.de)  
Dr. Manuel Kühner



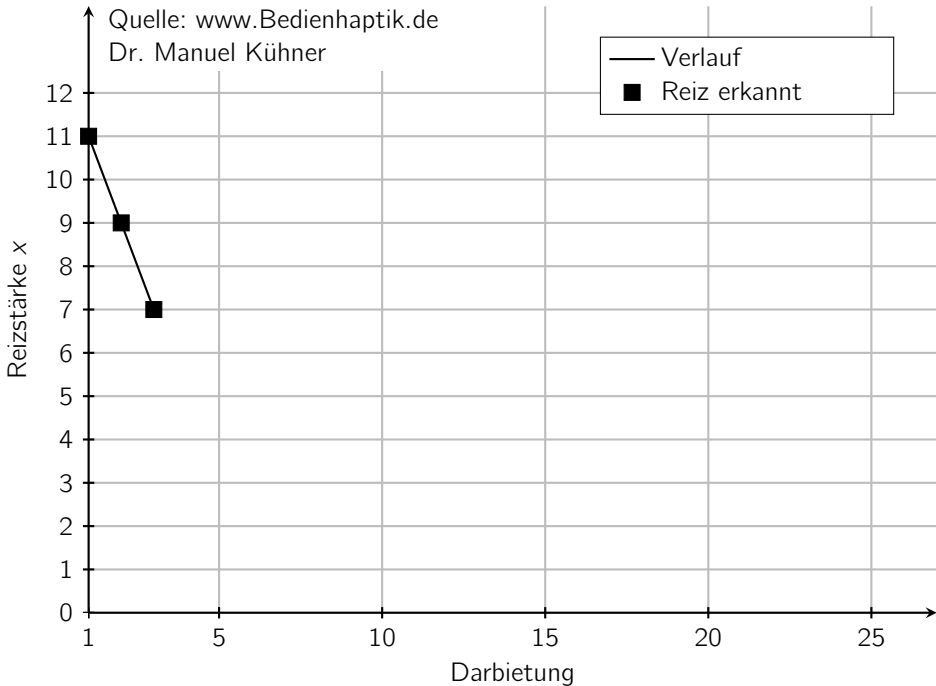
# Transformed-Up/Down-Verfahren (1Up/2Down-Regel)

Quelle: [www.Bedienhaptik.de](http://www.Bedienhaptik.de)  
Dr. Manuel Kühner



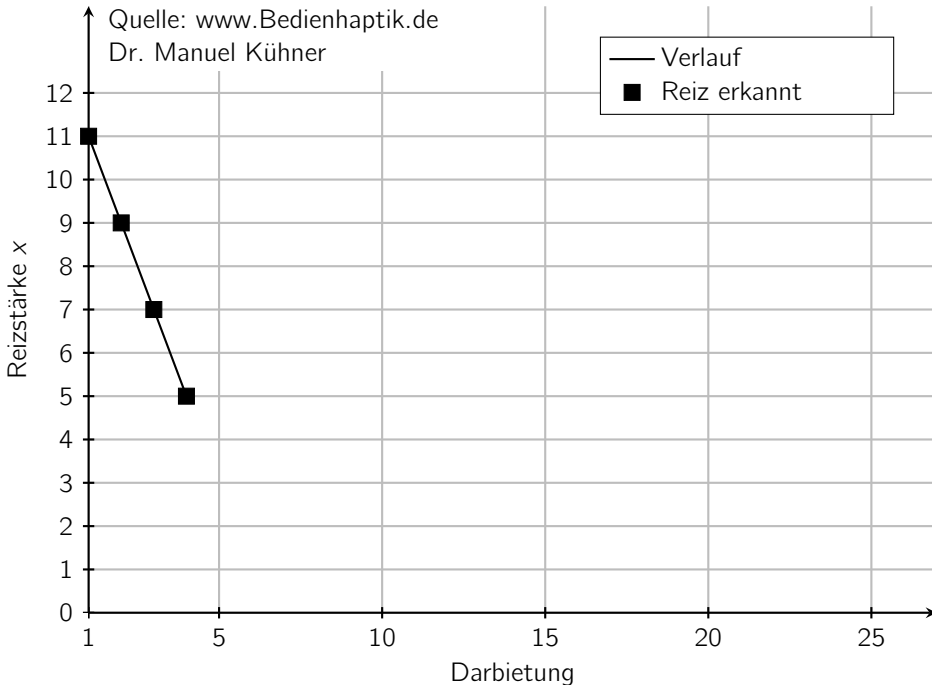
# Transformed-Up/Down-Verfahren (1Up/2Down-Regel)

Quelle: [www.Bedienhaptik.de](http://www.Bedienhaptik.de)  
Dr. Manuel Kühner



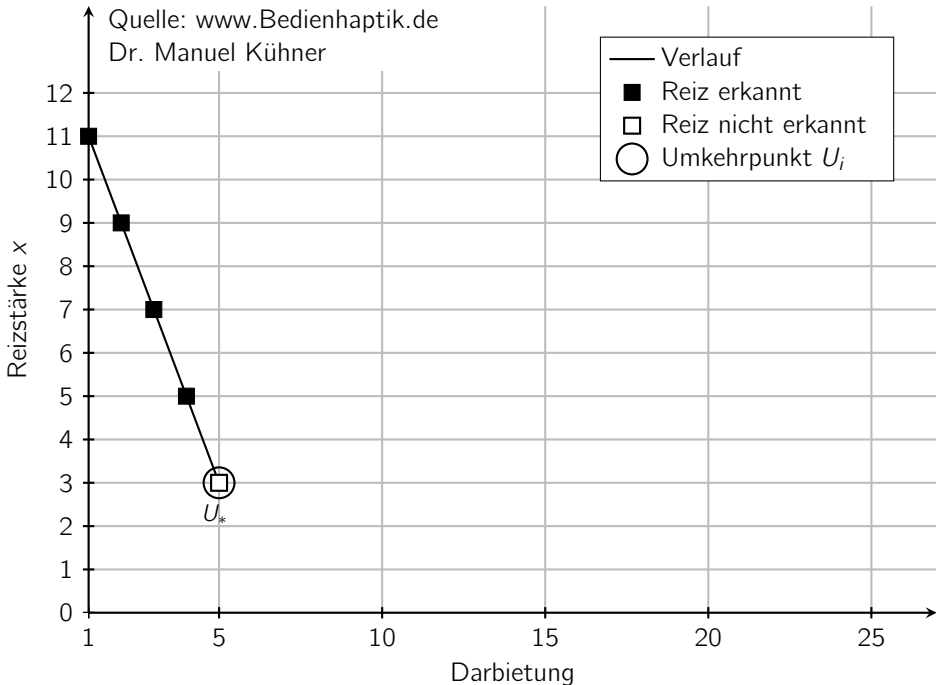
# Transformed-Up/Down-Verfahren (1Up/2Down-Regel)

Quelle: [www.Bedienhaptik.de](http://www.Bedienhaptik.de)  
Dr. Manuel Kühner



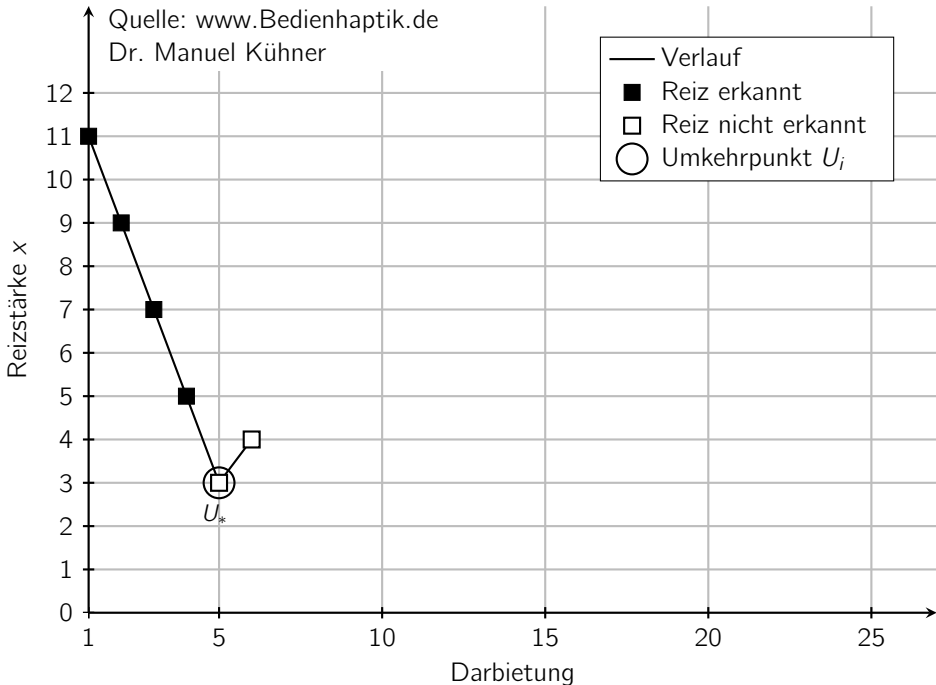
# Transformed-Up/Down-Verfahren (1Up/2Down-Regel)

Quelle: [www.Bedienhaptik.de](http://www.Bedienhaptik.de)  
Dr. Manuel Kühner



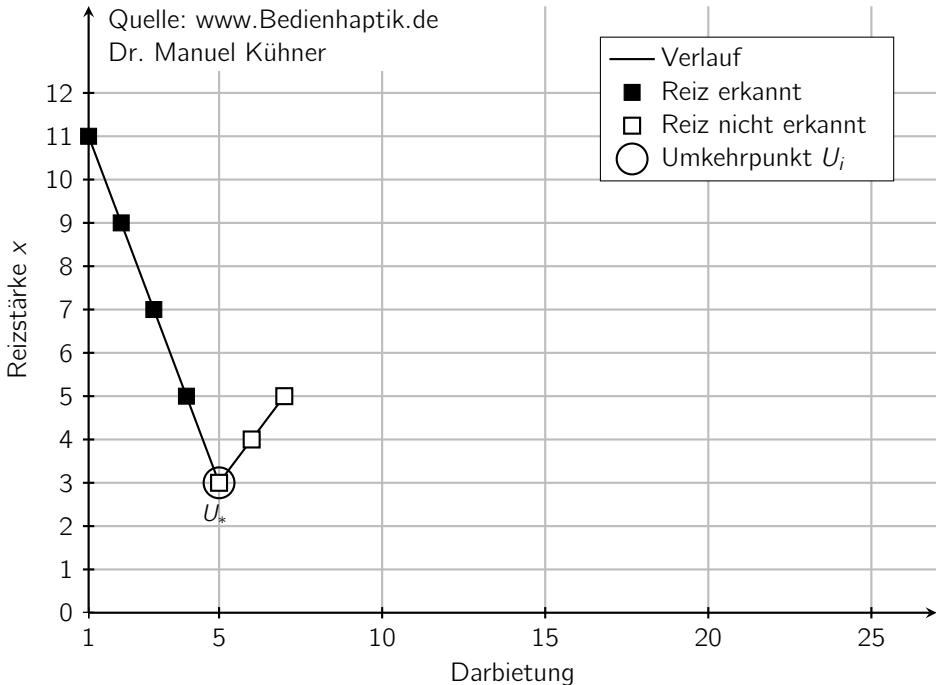
# Transformed-Up/Down-Verfahren (1Up/2Down-Regel)

Quelle: [www.Bedienhaptik.de](http://www.Bedienhaptik.de)  
Dr. Manuel Kühner



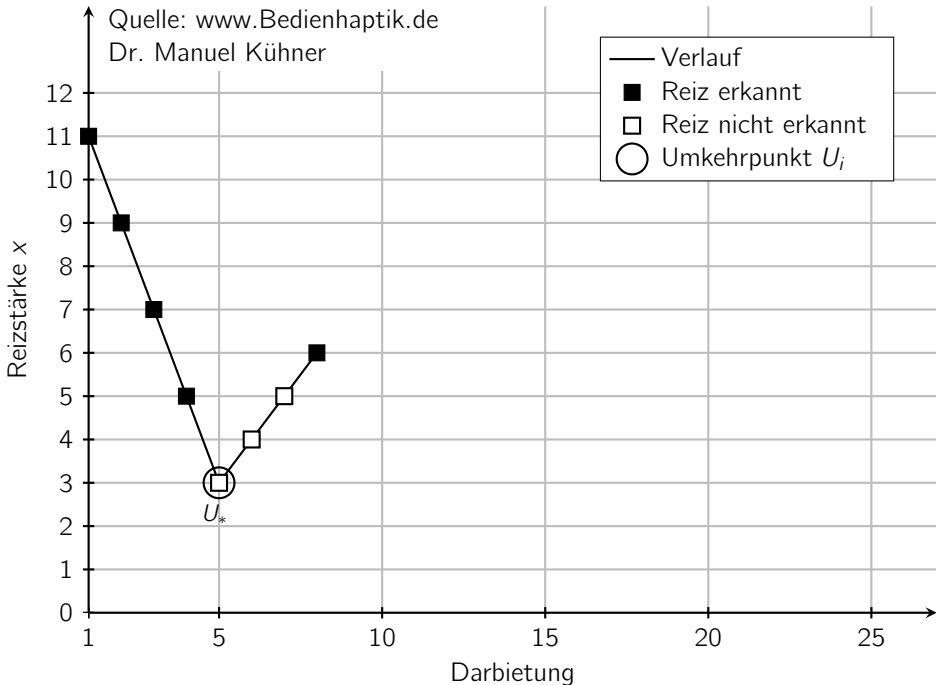
# Transformed-Up/Down-Verfahren (1Up/2Down-Regel)

Quelle: [www.Bedienhaptik.de](http://www.Bedienhaptik.de)  
Dr. Manuel Kühner



# Transformed-Up/Down-Verfahren (1Up/2Down-Regel)

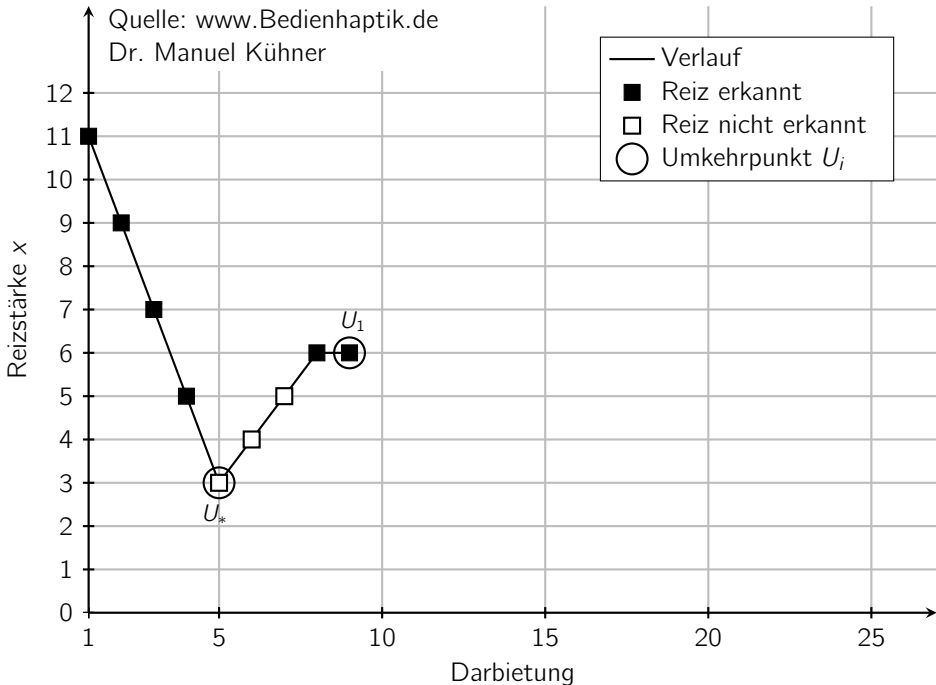
Quelle: [www.Bedienhaptik.de](http://www.Bedienhaptik.de)  
Dr. Manuel Kühner





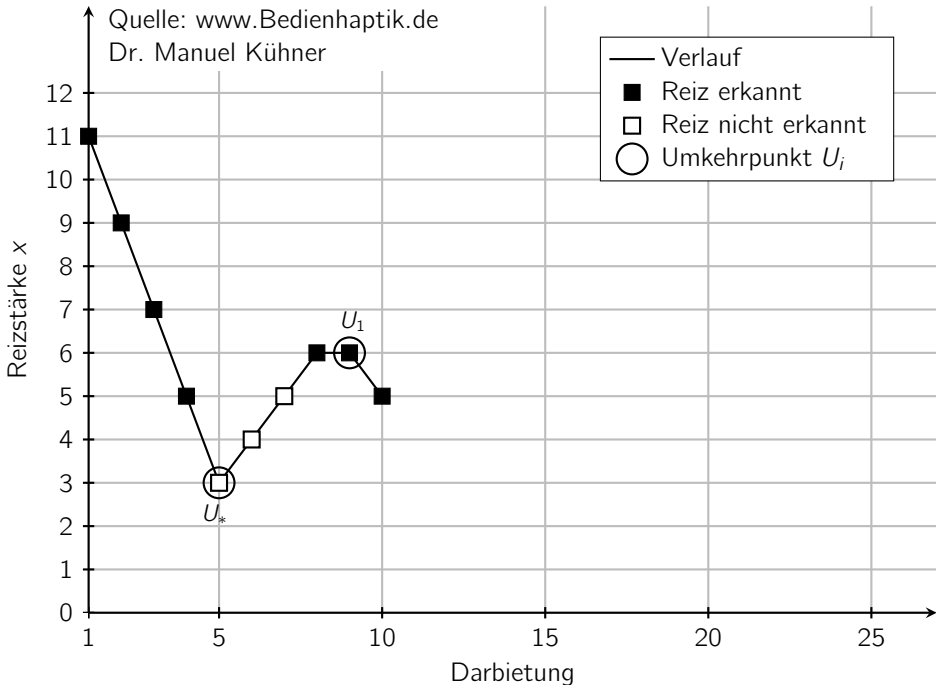
# Transformed-Up/Down-Verfahren (1Up/2Down-Regel)

Quelle: [www.Bedienhaptik.de](http://www.Bedienhaptik.de)  
Dr. Manuel Kühner



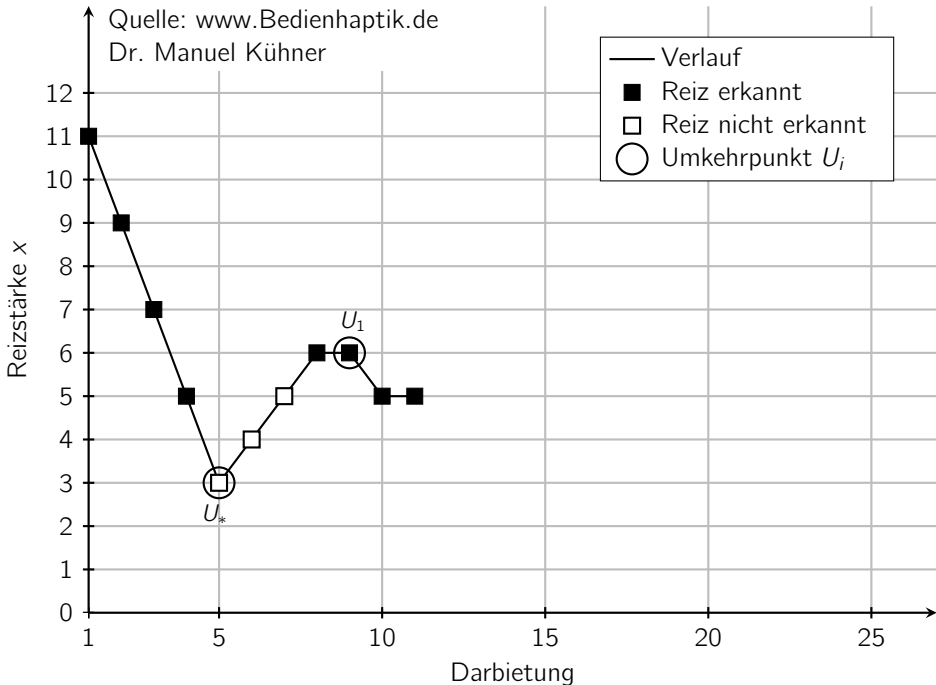
# Transformed-Up/Down-Verfahren (1Up/2Down-Regel)

Quelle: [www.Bedienhaptik.de](http://www.Bedienhaptik.de)  
Dr. Manuel Kühner



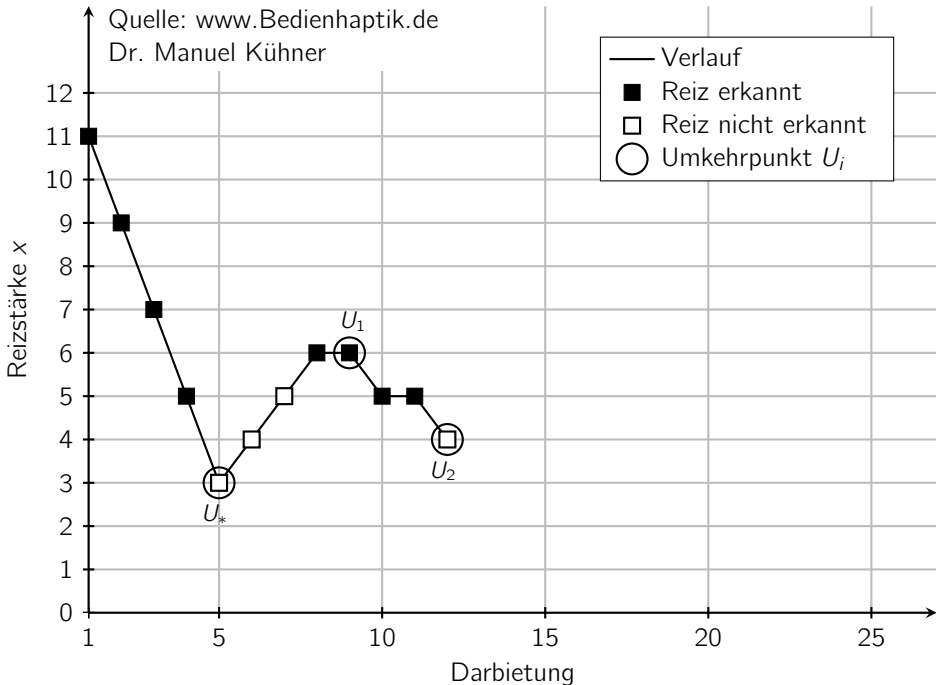
# Transformed-Up/Down-Verfahren (1Up/2Down-Regel)

Quelle: [www.Bedienhaptik.de](http://www.Bedienhaptik.de)  
Dr. Manuel Kühner



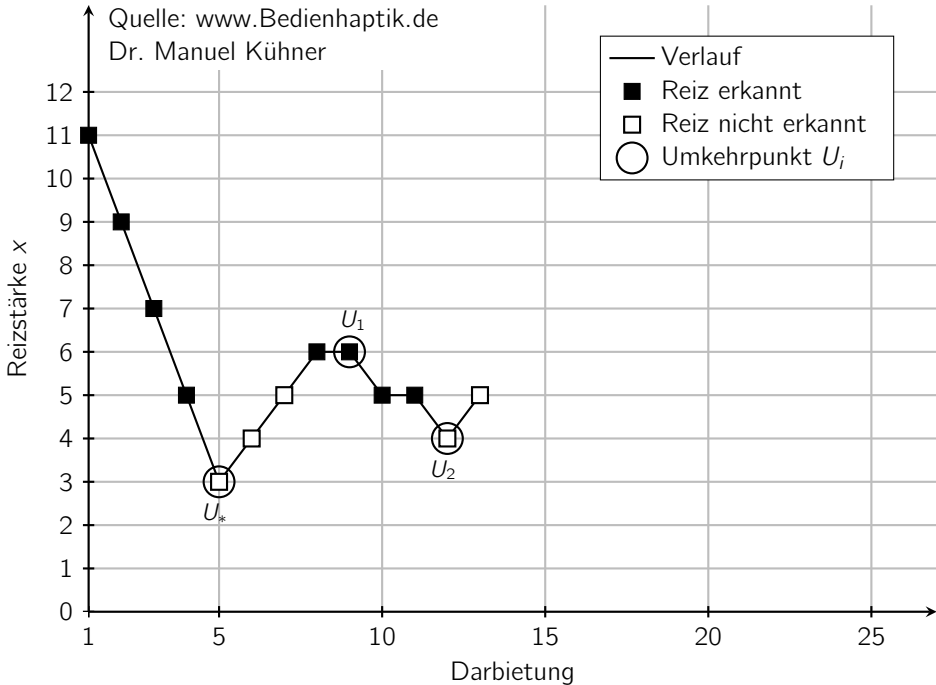
# Transformed-Up/Down-Verfahren (1Up/2Down-Regel)

Quelle: [www.Bedienhaptik.de](http://www.Bedienhaptik.de)  
Dr. Manuel Kühner



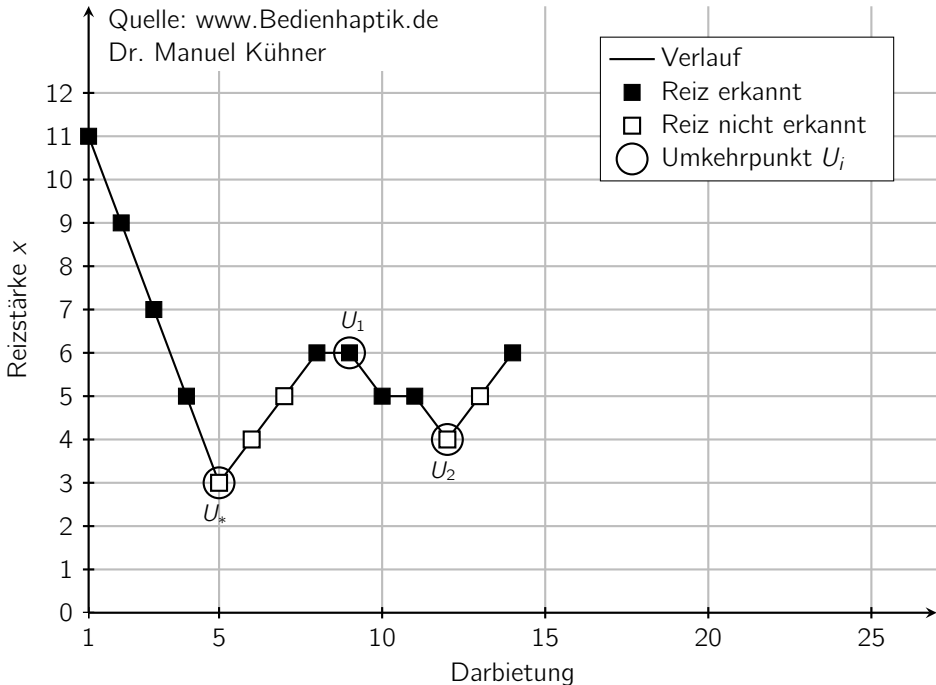
# Transformed-Up/Down-Verfahren (1Up/2Down-Regel)

Quelle: [www.Bedienhaptik.de](http://www.Bedienhaptik.de)  
Dr. Manuel Kühner



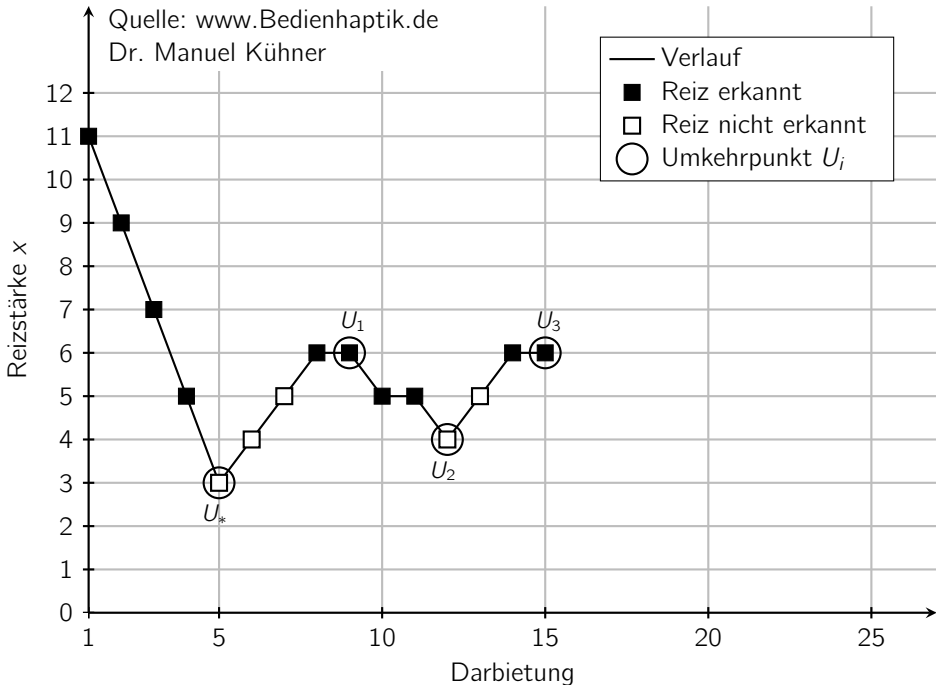
# Transformed-Up/Down-Verfahren (1Up/2Down-Regel)

Quelle: [www.Bedienhaptik.de](http://www.Bedienhaptik.de)  
Dr. Manuel Kühner



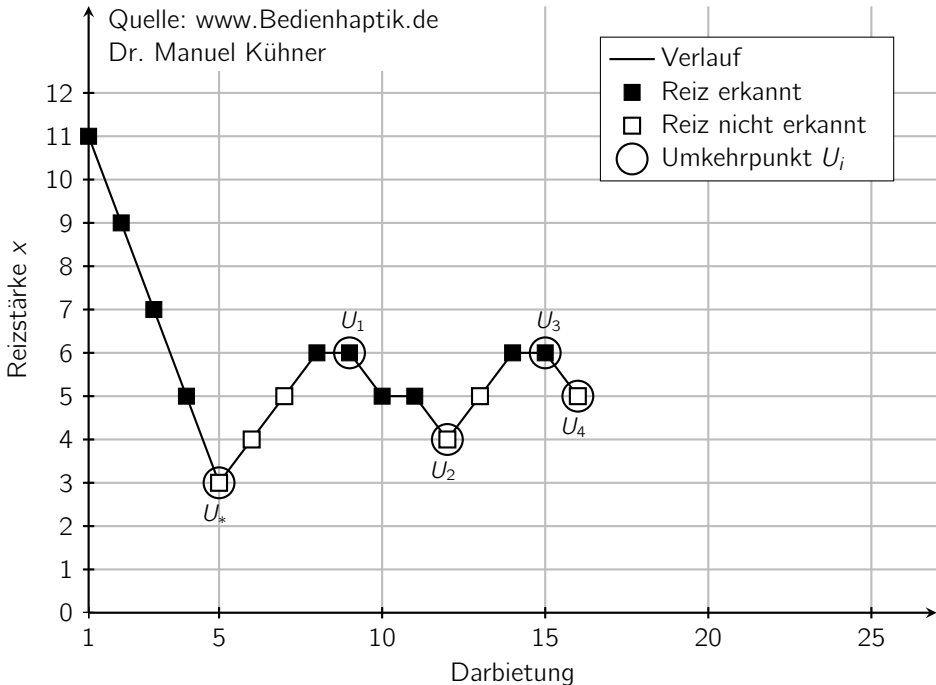
# Transformed-Up/Down-Verfahren (1Up/2Down-Regel)

Quelle: [www.Bedienhaptik.de](http://www.Bedienhaptik.de)  
Dr. Manuel Kühner



# Transformed-Up/Down-Verfahren (1Up/2Down-Regel)

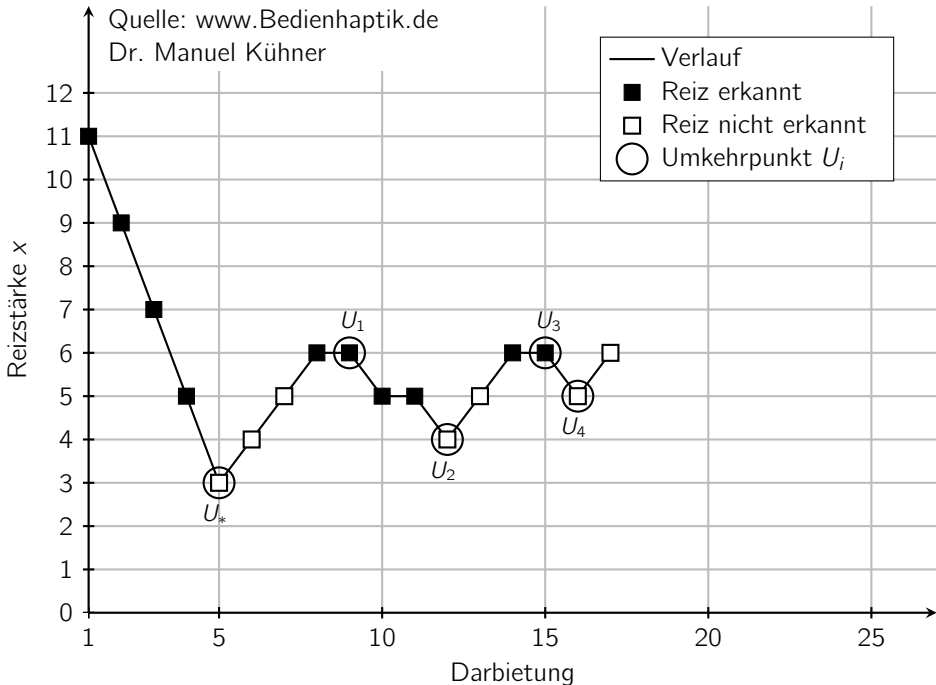
Quelle: [www.Bedienhaptik.de](http://www.Bedienhaptik.de)  
Dr. Manuel Kühner





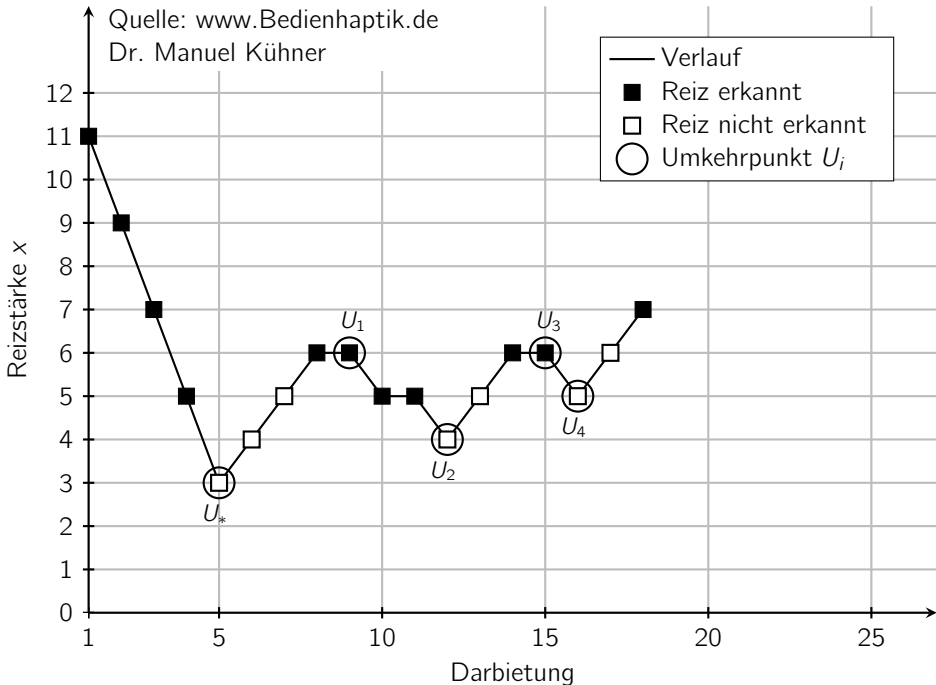
# Transformed-Up/Down-Verfahren (1Up/2Down-Regel)

Quelle: [www.Bedienhaptik.de](http://www.Bedienhaptik.de)  
Dr. Manuel Kühner



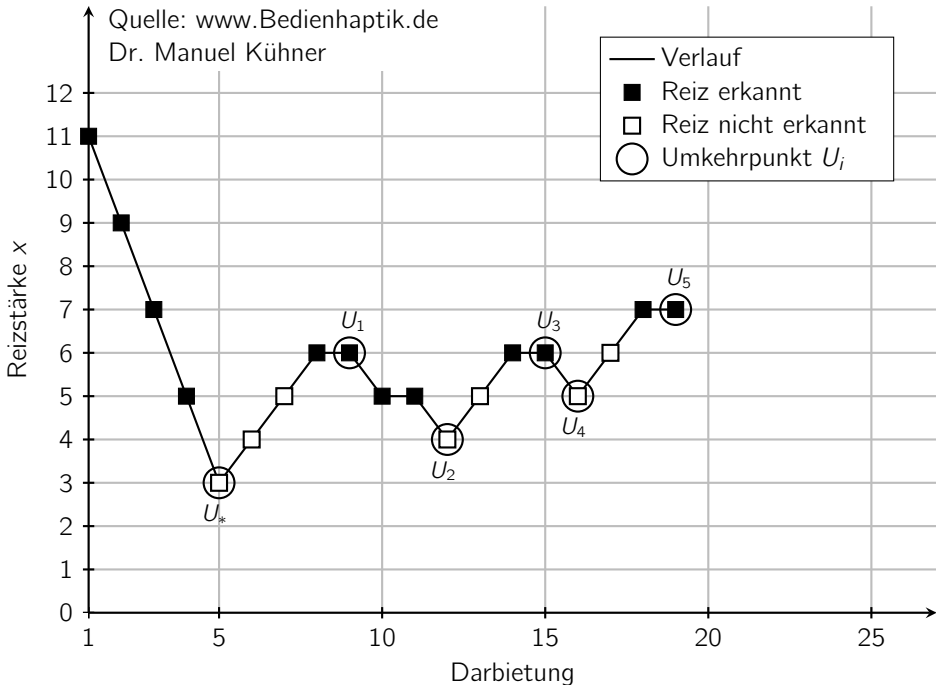
# Transformed-Up/Down-Verfahren (1Up/2Down-Regel)

Quelle: [www.Bedienhaptik.de](http://www.Bedienhaptik.de)  
Dr. Manuel Kühner



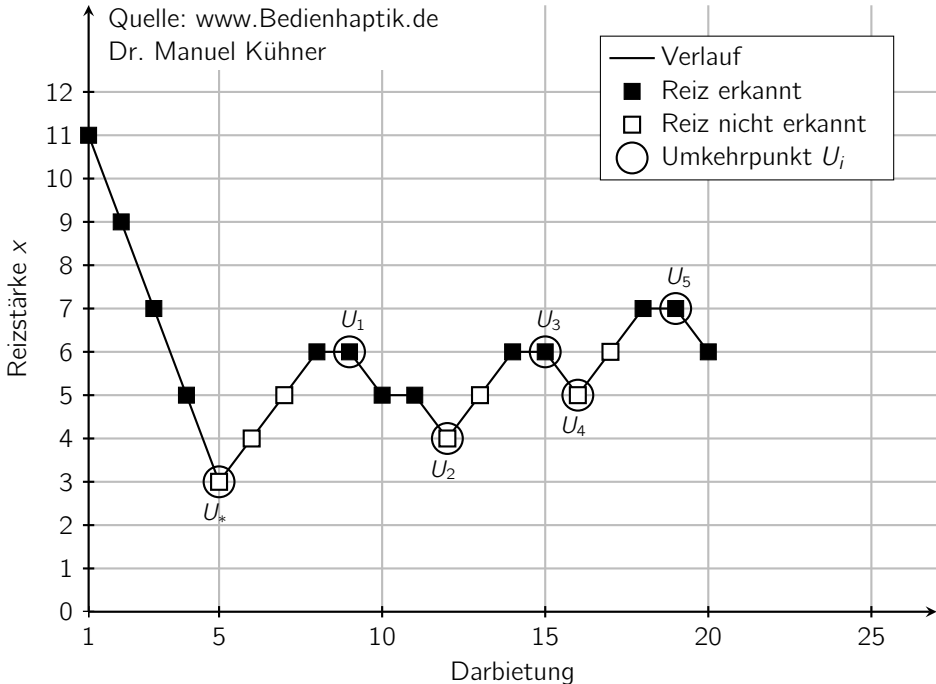
# Transformed-Up/Down-Verfahren (1Up/2Down-Regel)

Quelle: [www.Bedienhaptik.de](http://www.Bedienhaptik.de)  
Dr. Manuel Kühner



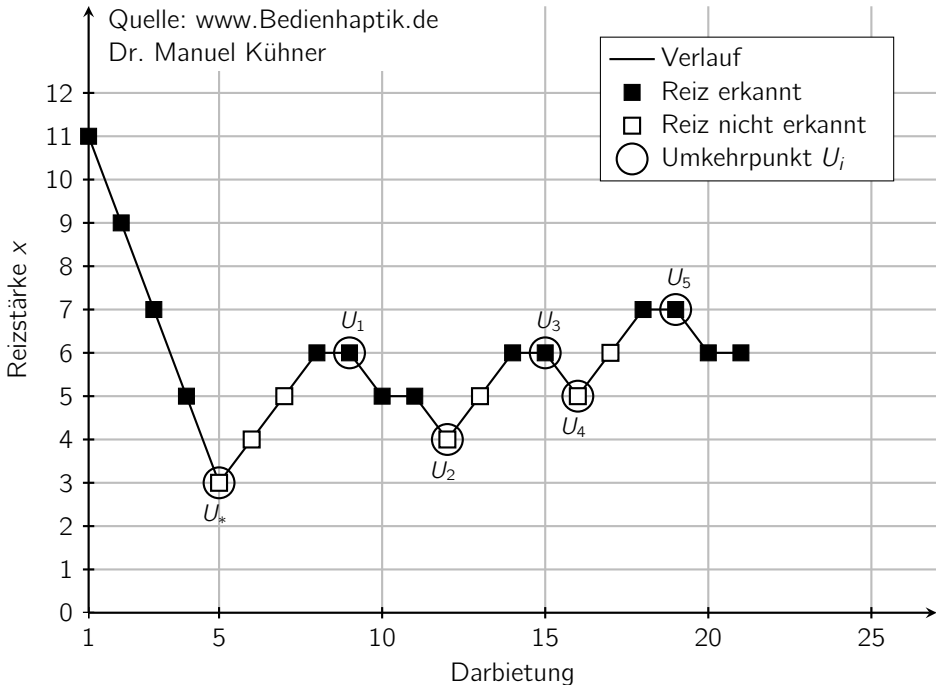
# Transformed-Up/Down-Verfahren (1Up/2Down-Regel)

Quelle: [www.Bedienhaptik.de](http://www.Bedienhaptik.de)  
Dr. Manuel Kühner



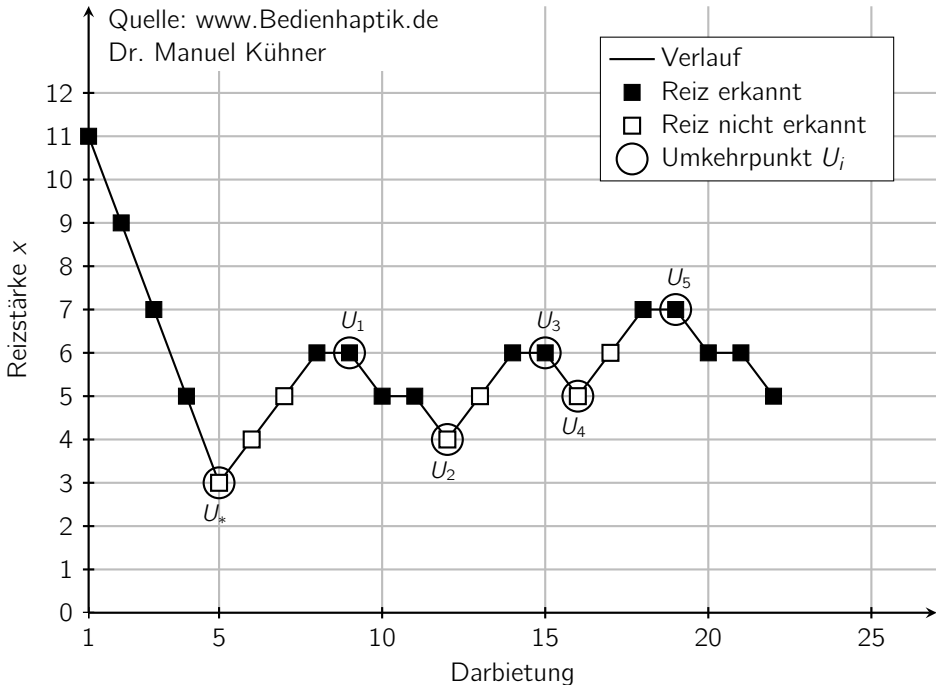
# Transformed-Up/Down-Verfahren (1Up/2Down-Regel)

Quelle: [www.Bedienhaptik.de](http://www.Bedienhaptik.de)  
Dr. Manuel Kühner



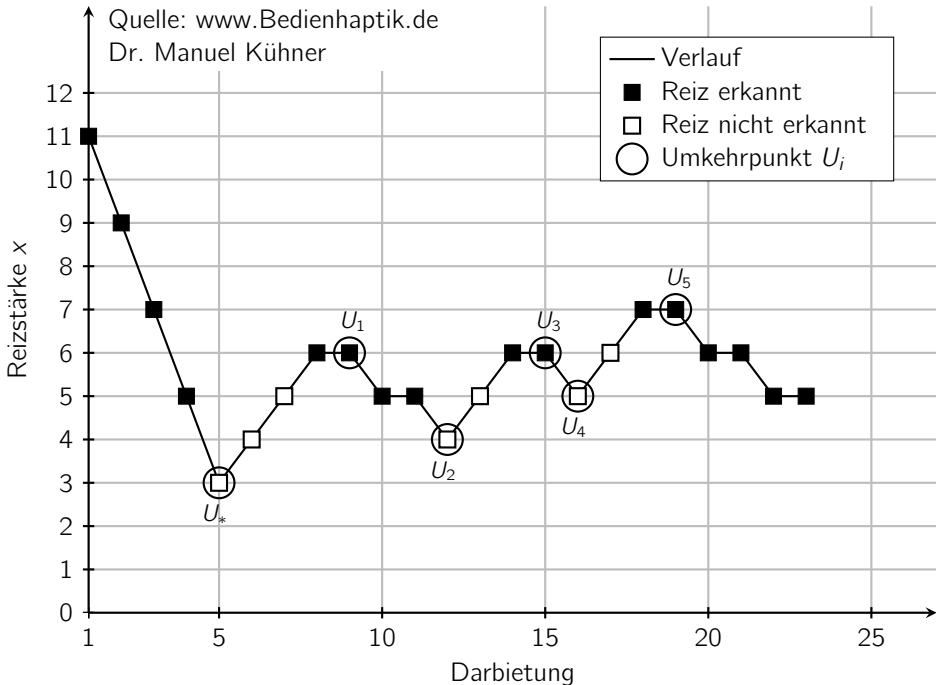
# Transformed-Up/Down-Verfahren (1Up/2Down-Regel)

Quelle: [www.Bedienhaptik.de](http://www.Bedienhaptik.de)  
Dr. Manuel Kühner



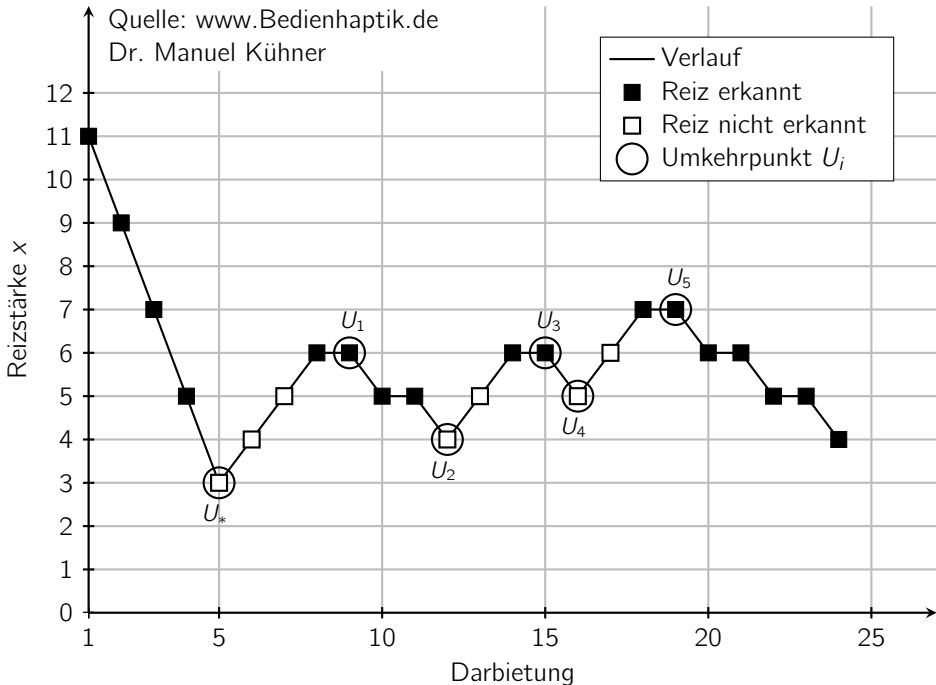
# Transformed-Up/Down-Verfahren (1Up/2Down-Regel)

Quelle: [www.Bedienhaptik.de](http://www.Bedienhaptik.de)  
Dr. Manuel Kühner



# Transformed-Up/Down-Verfahren (1Up/2Down-Regel)

Quelle: [www.Bedienhaptik.de](http://www.Bedienhaptik.de)  
Dr. Manuel Kühner





# Transformed-Up/Down-Verfahren (1Up/2Down-Regel)

Quelle: [www.Bedienhaptik.de](http://www.Bedienhaptik.de)  
Dr. Manuel Kühner

